

Tourist Information Alzeyer Land & Rheinhessische Schweiz

Antoniterstraße 41
55232 Alzey

Tel: +49 6731 499364
Fax: +49 6731 990885

touristinfo@alzey.de
<http://www.alzeyer-land.de>

Information for guests with walking difficulties

Information on accessibility was evaluated and verified on May 4, 2023 as part of the quality criteria / system "Tourism for all".

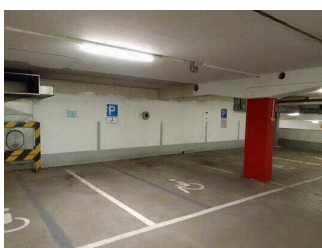
Images of the building/object



Tourist Information
Alzeyer Land &
Rheinhessische
Schweiz

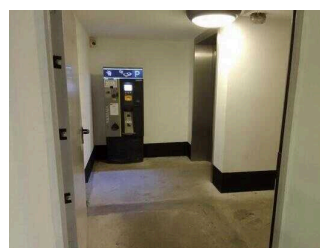
©Robert Dieth

Underground parking lot



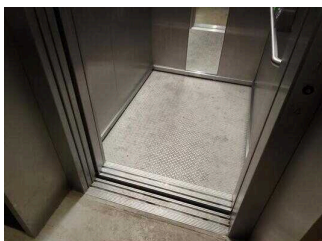
Underground parking
lot

(c)Julia Marmulla



Underground parking
lot

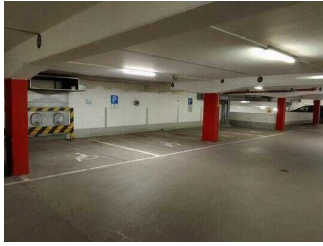
(c)Julia Marmulla



Underground parking
lot

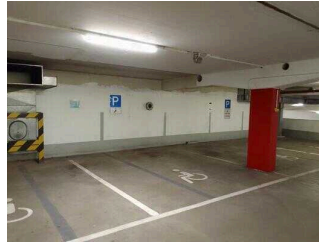
(c)Julia Marmulla

Underground parking lot (basement)



Underground parking lot

(c)Julia Marmulla



Underground parking lot

(c)Julia Marmulla

There is a general parking lot available.

There is at least one parking space for people with disabilities.

There is/are 4 parking space(s) for people with disabilities.

Parking space width: 348 cm

Parking space length: 505 cm

The surface quality of the car park is vibration-free and is easy to walk and drive on (e.g. asphalt, narrow-jointed slabs, etc.).

Distance from the parking space(s) for people with disabilities to the entrance area: 80 m

The parking space(s) for people with disabilities is/are marked.

Parking machine in the underground garage



Parking machine in the underground garage

(c)Julia Marmulla



Parking machine in the underground garage

(c)Julia Marmulla

The HIGHEST position of the operating elements from the ground: 130 cm

The LOWEST position of the operating elements from the ground: 97 cm

Way across the forecourt



Way across the forecourt

(c)Julia Marmulla



Way across the forecourt

(c)Julia Marmulla



Way across the forecourt

(c)Julia Marmulla

Width of the path: 200 cm

Length of the path: 50 m

The surface of the path is low in vibrations and easy to walk on (e.g. asphalt, narrow-jointed slabs, etc.).

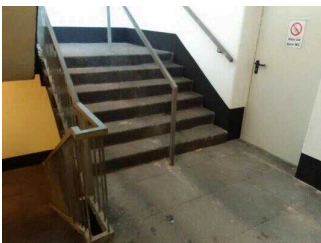
Maximum longitudinal gradient of the path: 0 %

Maximum longitudinal gradient over a distance of 50 m.

There is seating available.

Additional information only available in German: Zwischen Aufzug, WC und Eingangsbereich wurde das Kopfsteinpflaster behandelt, so dass es erschütterungsarm ist (nicht erschütterungsfrei). Vom Parkplatz über die Straße bis zur Rampe hat diese Maßnahme nicht stattgefunden.

Stairs from the underground parking to the forecourt



Stairs from the underground parking to the forecourt

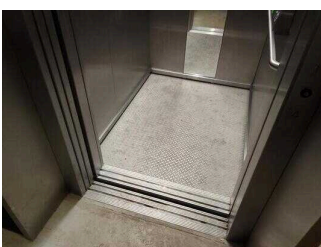
(c)Julia Marmulla

Existing thresholds/steps: 18

The height of the thresholds/steps: 17 cm

The staircase has handrails on both sides.

Elevator from the underground parking to the forecourt



Elevator from the underground parking to the forecourt

(c)Julia Marmulla



Elevator from the underground parking to the forecourt

(c)Julia Marmulla

The WIDTH of the manoeuvring space in front of the elevator when entering: 200 cm

The DEPTH of the manoeuvring space in front of the elevator when entering: 180 cm

Clear passage width of the elevator door: 90 cm

The WIDTH of the cabin inside: 107 cm

The DEPTH of the cabin inside: 138 cm

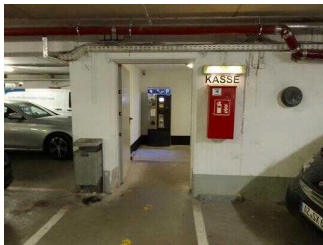
The WIDTH of the manoeuvring space in front of the elevator when exiting: 200 cm

The DEPTH of the manoeuvring space in front of the elevator when exiting: 200 cm

There is a horizontal control panel.

Door

Underground garage door (basement)



Underground garage door (basement)

(c)Julia Marmulla

Clear width of the passageway: 112 cm

Type of door: single leaf

The door is opened requiring the users own effort.

The WIDTH of the smaller manoeuvring area in front of / behind the door: 180 cm

The DEPTH of the smaller manoeuvring area in front of / behind the door: 200 cm

The threshold height: 0 cm

Door to the staircase (basement)

Clear width of the passageway: 88 cm

Type of door: single leaf

The door is opened requiring the users own effort.

The WIDTH of the smaller manoeuvring area in front of / behind the door: 180 cm

The DEPTH of the smaller manoeuvring area in front of / behind the door: 200 cm

The threshold height: 0 cm

Forecourt parking



Forecourt parking

(c)Julia Marmulla



Forecourt parking

(c)Julia Marmulla

Forecourt parking



Forecourt parking

(c)Julia Marmulla

There is a general parking lot available.

There is at least one parking space for people with disabilities.

There is/are 1 parking space(s) for people with disabilities.

Parking space width: 255 cm

Parking space length: 535 cm

The surface quality of the car park is not vibration free and is easy to walk and drive on (e.g. asphalt, narrow-jointed slabs, etc.).

Distance from the parking space(s) for people with disabilities to the entrance area: 30 m

The parking space(s) for people with disabilities is/are marked.

External path

Path across the forecourt to the ramp in the entrance area



Path across the forecourt to the ramp in the entrance area

(c)Julia Marmulla

Width of the path: 200 cm

Length of the path: 200 m

Due to its surface characteristics, the path is not vibration-free and easy to walk on (e.g. asphalt, narrow-jointed slabs, etc.).

Maximum longitudinal gradient of the path: 0 %

Maximum longitudinal gradient over a distance of 30 m.

There is seating available.

Way across the forecourt



Way across the forecourt

(c)Julia Marmulla



Way across the forecourt

(c)Julia Marmulla



Way across the forecourt

(c)Julia Marmulla

Width of the path: 200 cm

Length of the path: 50 m

The surface of the path is low in vibrations and easy to walk on (e.g. asphalt, narrow-jointed slabs, etc.).

Maximum longitudinal gradient of the path: 0 %

Maximum longitudinal gradient over a distance of 50 m.

There is seating available.

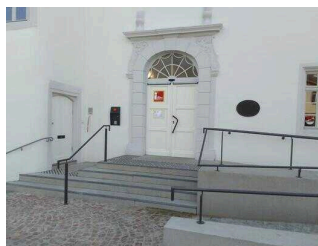
Additional information only available in German: Zwischen Aufzug, WC und Eingangsbereich wurde das Kopfsteinpflaster behandelt, so dass es erschütterungsarm ist (nicht erschütterungsfrei). Vom Parkplatz über die Straße bis zur Rampe hat diese Maßnahme nicht stattgefunden.

Entrance



Entrance

(c)Julia Marmulla



Entrance

(c)Julia Marmulla



Entrance

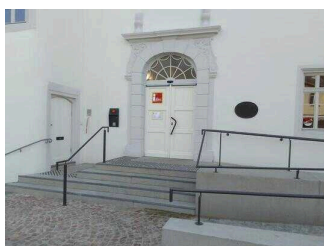
(c)Julia Marmulla



Entrance

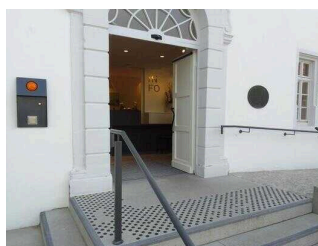
(c)Julia Marmulla

Entrance



Entrance

(c)Julia Marmulla



Entrance

(c)Julia Marmulla



Entrance

(c)Julia Marmulla

The entrance / access to the building is possible without steps.

The entrance door

Clear width of the passageway: 142 cm

Type of door: double leaf

The door is opened without using any force (lever handle, light barrier sensor, motion detector, etc.).

The WIDTH of the smaller manoeuvring area in front of / behind the door: 160 cm

The DEPTH of the smaller manoeuvring area in front of / behind the door: 148 cm

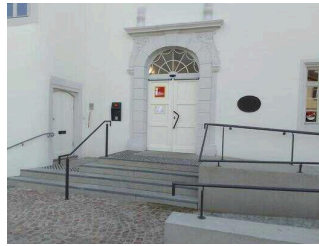
The threshold height: 0 cm

Stairs in the entrance area



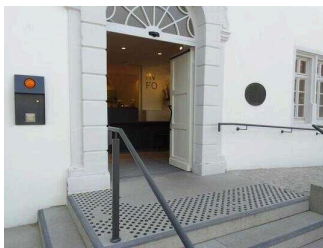
Stairs in the entrance area

(c)Julia Marmulla



Stairs in the entrance area

(c)Julia Marmulla



Stairs in the entrance area

(c)Julia Marmulla

Existing thresholds/steps: 3

The height of the thresholds/steps: 17 cm

The staircase has handrails on both sides.

Ramp in the entrance area



Ramp in the entrance area

(c)Julia Marmulla



Ramp in the entrance area

(c)Julia Marmulla

Maximum longitudinal gradient of the ramp: 5,5 %

Minimum width of the ramp: 150 cm

Length of the longest ramp section: 5 m

Minimum length of intermediate landings: 1 cm

The ramp has a total length of 13 m, including any existing landings.

The ramp has handrails on both sides.

There are no handrails available.

The WIDTH of the manoeuvring space in front of the ramp: 200 cm

The DEPTH of the manoeuvring space in front of the ramp: 200 cm

The WIDTH of the manoeuvring space at the end of the ramp: 148 cm

The DEPTH of the manoeuvring space at the end of the ramp: 160 cm

Consultation room



Consultation room

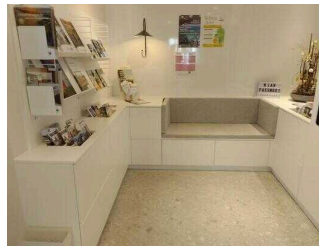
(c)Julia Marmulla

Consultation room



Consultation room

(c)Julia Marmulla



Consultation room

(c)Julia Marmulla

The WIDTH of the room: 8 m

The DEPTH of the room: 4 m

The width of the narrowest passageway in the room: 148 cm

There is seating available.

Counter



Counter

(c)Julia Marmulla

Counter



Counter

(c)Julia Marmulla

The WIDTH of the manoeuvring space in front of the counter: 200 cm

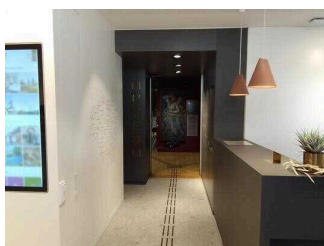
The DEPTH of the manoeuvring space in front of the counter: 148 cm

The counter / cash desk is at its highest point 115 cm high.

The counter / cash desk is at its lowest point 85 cm high.

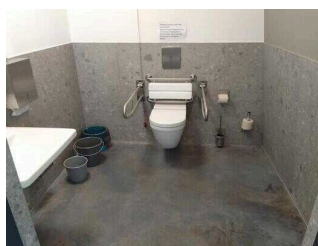
There is another, equivalent communication possibility while in a sitting position.

WC in the museum area



WC in the museum area

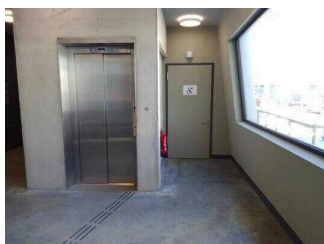
(c)Julia Marmulla



WC in the museum area

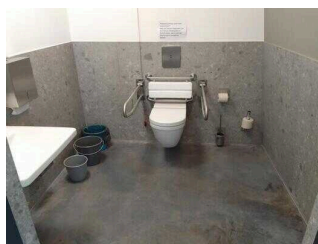
(c)Julia Marmulla

WC for people with disabilities in the museum area



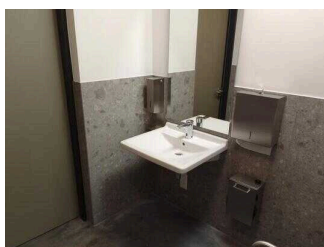
WC for people with disabilities in the museum area

(c)Julia Marmulla



WC for people with disabilities in the museum area

(c)Julia Marmulla



WC for people with disabilities in the museum area

(c)Julia Marmulla

Door to public toilet

Clear width of the passageway: 90 cm

Type of door: single leaf

The door is opened requiring the users own effort.

The smaller manoeuvring area in front of / behind the door is 146 cm deep an 152 cm wide.

The threshold height: 0 cm

The toilet door can be opened without a key.

Toilet/WC

There is a uni-sex toilet.

There is a toilet available for people with disabilities.

The depth of the toilet bowl: 70 cm

The WIDTH of the manoeuvring space left of the toilet: 90 cm

The DEPTH of the manoeuvring space left of the toilet: 70 cm

The WIDTH of the manoeuvring space right of the toilet: 88 cm

The DEPTH of the manoeuvring space right of the toilet: 70 cm

The WIDTH of the manoeuvring space in front of the toilet: 152 cm

The DEPTH of the manoeuvring space in front of the toilet: 146 cm

The height of the toilet seat: 54,5 cm

There is a grab rail on the left side of the toilet.

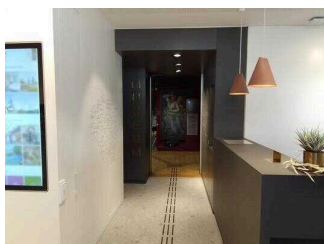
There is a grab rail on the right side of the toilet.

Washbasin/sink

The WIDTH of the manoeuvring space in front of the sink: 146 cm

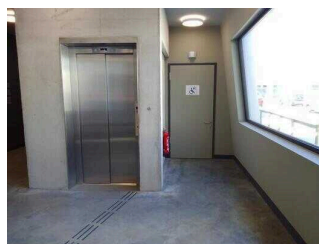
The DEPTH of the manoeuvring space in front of the sink: 152 cm

Path from the consultation room to the WC for people with disabilities in the museum area



Path from the consultation room to the WC for people with disabilities in the museum area

(c)Julia Marmulla



Path from the consultation room to the WC for people with disabilities in the museum area

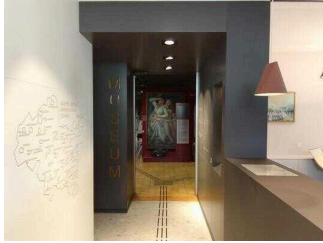
(c)Julia Marmulla

Length of the corridor/way/aisle: 25 m

Minimum width of the corridor/way/aisle: 200 cm

Existing passageways are at least 88 cm wide.

Door / passage to the museum area



Door / passage to the museum area

(c)Julia Marmulla

Clear width of the passageway: 118 cm

Type of door/passageway: other

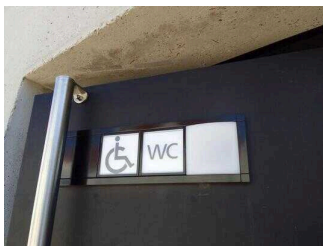
The door is opened without using any force (lever handle, light barrier sensor, motion detector, etc.).

The WIDTH of the smaller manoeuvring area in front of / behind the door: 120 cm

The DEPTH of the smaller manoeuvring area in front of / behind the door: 200 cm

The threshold height: 0 cm

WC in the forecourt area



WC in the forecourt area

(c)Julia Marmulla



WC in the forecourt area

(c)Julia Marmulla

WC for people with disabilities in the forecourt area



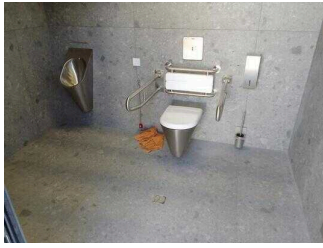
WC for people with disabilities in the forecourt area

(c)Julia Marmulla



WC for people with disabilities in the forecourt area

(c)Julia Marmulla



WC for people with disabilities in the forecourt area

(c)Julia Marmulla



WC for people with disabilities in the forecourt area

(c)Julia Marmulla

Door to public toilet

Clear width of the passageway: 90 cm

Type of door: single leaf

The door is opened requiring the users own effort.

The smaller manoeuvring area in front of / behind the door is 145 cm deep an 200 cm wide.

The threshold height: 0 cm

The toilet door can be opened with a Euro-key.

Toilet/WC

There is a uni-sex toilet.

There is a toilet available for people with disabilities.

The depth of the toilet bowl: 70 cm

The WIDTH of the manoeuvring space left of the toilet: 150 cm

The DEPTH of the manoeuvring space left of the toilet: 70 cm

The WIDTH of the manoeuvring space right of the toilet: 89 cm

The DEPTH of the manoeuvring space right of the toilet: 70 cm

The WIDTH of the manoeuvring space in front of the toilet: 200 cm

The DEPTH of the manoeuvring space in front of the toilet: 145 cm

The height of the toilet seat: 48 cm

There is a grab rail on the left side of the toilet.

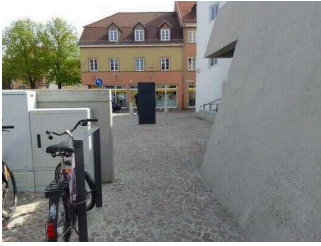
There is a grab rail on the right side of the toilet.

Washbasin/sink

The WIDTH of the manoeuvring space in front of the sink: 145 cm

The DEPTH of the manoeuvring space in front of the sink: 200 cm

Way across the forecourt



Way across the forecourt

(c)Julia Marmulla



Way across the forecourt

(c)Julia Marmulla



Way across the forecourt

(c)Julia Marmulla

Width of the path: 200 cm

Length of the path: 50 m

The surface of the path is low in vibrations and easy to walk on (e.g. asphalt, narrow-jointed slabs, etc.).

Maximum longitudinal gradient of the path: 0 %

Maximum longitudinal gradient over a distance of 50 m.

There is seating available.

Additional information only available in German: Zwischen Aufzug, WC und Eingangsbereich wurde das Kopfsteinpflaster behandelt, so dass es erschütterungsarm ist (nicht erschütterungsfrei). Vom Parkplatz über die Straße bis zur Rampe hat diese Maßnahme nicht stattgefunden.

Alarm/Aids

Alarm/Aids

Führungen

Guided tours

Guided tours are offered for people with walking impairments.

The guides are trained so that people with walking impairments can participate in any guided tour.

There are mobile or fixed seats available for people with walking impairments, which can be used during the guided tour.

The entire route of the guided tour is accessible for wheelchair users.